

SUGGESTED USE Consume 2 level scoops (approximately 1 teaspoon) daily. Two scoops is the equivalent of 5 capsules of our encapsulated **Glucosamine 1500 with Chondroitin 1200**, which is the clinically established level to achieve optimum results. You can also choose to consume less than 2 scoops daily or as recommended by your physician. Neither Glucosamine Sulfate nor Chondroitin Sulfate are readily water-soluble, so this product is not intended to be added to water, but instead, to smoothies, yogurt, oatmeal, applesauce, etc. As with any dietary supplement, this product is most effective when combined with a healthy diet and lifestyle. **For questions about the use of this product call 800.332.7799.**



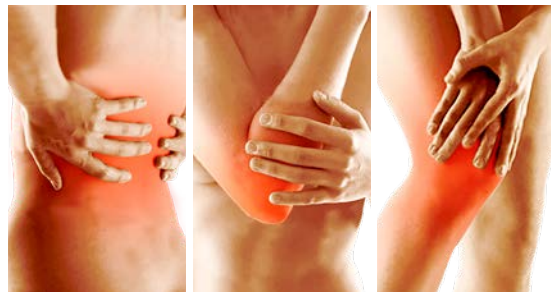
ANDREW LESSMAN

PROCAPS
LABORATORIES



All Sulfate | Sodium Free
GLUCOSAMINE 1500
with
CHONDROITIN 1200™

Scientifically Established Joint Support
Clinically Established Levels and Forms



Dietary Supplement | **Bulk Powder** | 21.3 oz (1.33 lbs) (606.2 g)
900 Capsule Equivalent

Andrew Lessman's GLUCOSAMINE 1500 with CHONDROITIN 1200 delivers the optimum potencies and ideal forms (**All Sulfate and Sodium-Free**) of the most essential ingredients for the repair and maintenance of healthy joint tissue. This unique formula begins with clinically-established levels and forms of the most well-researched natural ingredients for joint health: **Glucosamine Sulfate** (1,500 mg) and **Chondroitin Sulfate** (1,200 mg). Glucosamine and Chondroitin have been recognized as the first line of natural defense for joint health. These unique ingredients are not drugs treating joint ailments, but more importantly, represent the vital structure of joint tissue itself. The benefits of Glucosamine and Chondroitin have also been shown to extend beyond our joints and also promote the resiliency of other flexible tissues in the body, such as the skin, arteries, veins and heart valves. Glucosamine Sulfate has long been viewed as the first line of natural defense for our joints, but unlike ordinary products, we do not use unproven and ineffective Glucosamine HCl (Hydrochloride). We only use the form of Glucosamine established as effective in the scientific literature – Glucosamine Sulfate. We also use Sodium-Free Chondroitin Sulfate, which eliminates the unnecessary and undesirable sodium present in ordinary Chondroitin Sulfate. Properly delivered, Glucosamine, Chondroitin and Sulfur from Sulfate represent the vital building blocks or the “bricks and mortar” of our joints. By providing these essential structural molecules in their optimum forms and at their ideal potencies, we deliver maximum benefits to joint structure, health and function. Our joints never cease working on our behalf and our uniquely formulated and ideally balanced **Glucosamine 1500 with Chondroitin 1200** is the perfect response to the consequences of a lifetime of wear and tear.

These statements have not been evaluated by the Food and Drug Administration. This product is not intended to diagnose, treat, cure or prevent any disease.

CONTAINS NO ADDITIVES OF ANY KIND

Supplement Facts

Serving Size	1 Scoop (1.6g) (½ tsp)	2 Scoops (3.3g)(1 tsp)
Servings Per Container	360	180
Amount Per Serving	%DV*	%DV*
Glucosamine Sulfate as Potassium Glucosamine Sulfate	750 mg † 1,000 mg	1,500 mg † 2,000 mg
Chondroitin Sulfate (from calcium chondroitin sulfate)	600 mg †	1,200 mg †
Calcium (from calcium chondroitin sulfate)	40 mg 3%	80 mg 6%
Potassium (from potassium glucosamine sulfate)	115 mg 2%	230 mg 5%

* Percent Daily Values (%DV) are based on a 2,000 calorie diet. † Daily Value not established.

CONTAINS NO Milk, soy, yeast, corn, wheat, gluten, sodium, salt, sugar, fat, cholesterol, color, preservative, genetically modified (GMO) ingredients or manufacturing additives.

Contains an ingredient derived from the shells of shellfish (shrimp, crab and crawfish). This package is sold by weight, not by volume. It contains the full weight indicated on the label. Settling of contents can occur during shipment.

FOR OVER 40 YEARS
Unsurpassed Purity, Quality
and Efficacy

100% SOLAR PRODUCTION
ZERO CARBON FOOTPRINT

PROCAPS
LABORATORIES

Andrew Lessman, Founder

QUESTIONS? | REORDERS?

800.800.1200 • www.PROCAPSLABS.com

607980-11M

779959



Manufactured by ProCaps Labs,
Henderson, NV 89011